

HIGH PRESSURE HYDRAULIC TOOLS

BMSX SERIES SINGLE ACTING HIGH TONNAGE CYLINDER

CAPACITY: 50-1000T

MAX. PRESSURE: 700 Bar



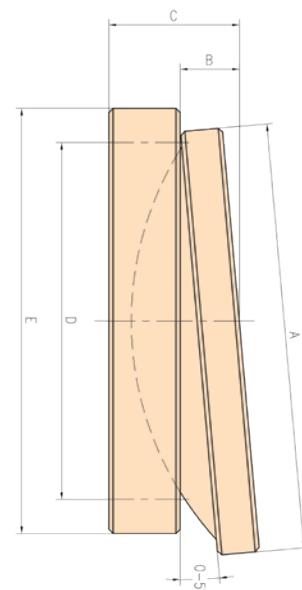
Safety Practices

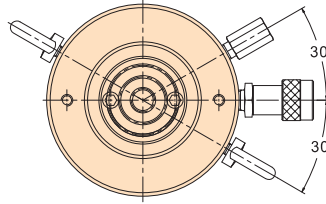
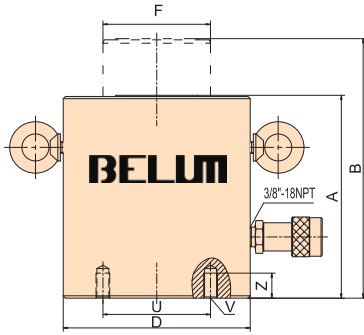
Good industry practice recommends not exceeding 80% of the max. rated capacity.

The CLSG series single acting high tonnage construction cylinders is ideally suited for construction, civil engineering, heavy fabrication and maintenance applications. All models are supplied with a tilting saddle fitted as standard and have an overstroke restrictor port to prevent over extension of the piston. Standard range models are featured in this catalogue, however additional capacities and stroke options are available on request.

Tilt Saddle Selection

Cylinder Model	Saddle Model	Saddle Size				
		A mm	B mm	C mm	D mm	E mm
BMSX-50T / BMDX-50T	STX-50	49	24	43	39	49
BMSX-100T / BMDX-100T	STX-100	73	29	48	55	74
BMSX-150T / BMDX-150T	STX-150	91	31	50	74	94
BMSX-200T / BMDX-200T	STX-200	118	35	59	90	113
BMSX-250T / BMDX-250T	STX-250	144	46	70	120	145
BMSX-300T / BMDX-300T	STX-300	158	62	81	150	177
BMSX-400T / BMDX-400T	STX-400	193	51	78	170	196
BMSX-500T / BMDX-500T	STX-500	228	63	90	200	228
BMSX-600T / BMDX-600T	STX-600	241	76	103	220	247
BMSX-800T / BMDX-800T	STX-800	297	75	102	260	297
BMSX-1000T / BMDX-1000T	STX-1000	311	93	120	295	323





Valve

Model	Capacity @10,000 PSI (700 bar)	Stroke	Effective Area	Oil Capacity	Closed Height	Extended Height	Outside Diam.	Piston Diam.	Base Mounting Hole			Weight
									Bolt Circle	Thread	Thread Depth	
					Metric Ton	mm	cm ²	cm ³	A	B	D	
BMSX-502	50	50	75.4	377	162	212	130	70	65	M12	23	17
BMSX-504		100	75.4	754	212	312	130	70	65	M12	23	20
BMSX-506		150	75.4	1131	262	412	130	70	65	M12	23	23
BMSX-508		200	75.4	1508	312	512	130	70	65	M12	23	27
BMSX-5010		250	75.4	1885	362	612	130	70	65	M12	23	31
BMSX-5012		300	75.4	2262	412	712	130	70	65	M12	23	34
BMSX-1002	100	50	132.5	664	182	232	165	95	95	M12	23	28
BMSX-1004		100	132.5	1327	232	332	165	95	95	M12	23	33
BMSX-1006		150	132.5	1991	282	432	165	95	95	M12	23	40
BMSX-1008		200	132.5	2655	332	532	165	95	95	M12	23	50
BMSX-10010		250	132.5	3318	382	632	165	95	95	M12	23	61
BMSX-10012		300	132.5	3982	432	732	165	95	95	M12	23	71
BMSX-1502	150	50	202.5	1010	196	246	205	115	130	M12	23	39
BMSX-1504		100	202.5	2020	246	346	205	115	130	M12	23	52
BMSX-1506		150	202.5	3028	296	446	205	115	130	M12	23	65
BMSX-1508		200	202.5	4038	346	546	205	115	130	M12	23	78
BMSX-15010		250	202.5	5048	396	646	205	115	130	M12	23	92
BMSX-15012		300	202.5	6058	446	746	205	115	130	M12	23	105
BMSX-2002	200	50	266	1330	216	266	235	135	165	M12	23	55
BMSX-2006		150	266	3989	316	466	235	135	165	M12	23	91
BMSX-20012		300	266	7977	466	766	235	135	165	M12	23	146
BMSX-2502	250	50	362.7	1813	235	285	275	165	190	M12	23	89
BMSX-2506		150	362.7	5442	335	485	275	165	190	M12	23	136
BMSX-25012		300	362.7	10883	485	785	275	165	190	M12	23	207
BMSX-3002	300	50	452	2262	312	362	310	200	180	M16	30	184
BMSX-3006		150	452	6786	412	562	310	200	180	M16	30	232
BMSX-30012		300	452	13571	562	862	310	200	180	M16	30	303
BMSX-4002	400	50	572	2860	375	425	350	215	205	M16	30	270
BMSX-4006		150	572	8580	475	625	350	215	205	M16	30	330
BMSX-40012		300	572	17230	625	925	350	215	205	M16	30	421
BMSX-5002	500	50	730.6	3653	419	469	400	250	250	M24	36	401
BMSX-5006		150	730.6	10959	519	669	400	250	250	M24	36	480
BMSX-50012		300	730.6	21918	669	969	400	250	250	M24	36	599
BMSX-6002	600	50	855.3	4276	429	479	430	270	275	M24	36	474
BMSX-6006		150	855.3	12829	529	679	430	270	275	M24	36	565
BMSX-60012		300	855.3	25659	679	979	430	270	275	M24	36	701
BMSX-8002	800	50	1163	5816	474	524	505	320	330	M24	36	741
BMSX-8006		150	1163	17450	574	724	505	320	330	M24	36	868
BMSX-80012		300	1163	34900	724	1024	505	320	330	M24	36	1058
BMSX-10002	1000	50	1450	7255	564	614	560	345	375	M24	36	1062
BMSX-10006		150	1450	21766	664	814	560	345	375	M24	36	1213
BMSX-10012		300	1450	43532	814	1114	560	345	375	M24	36	1439